

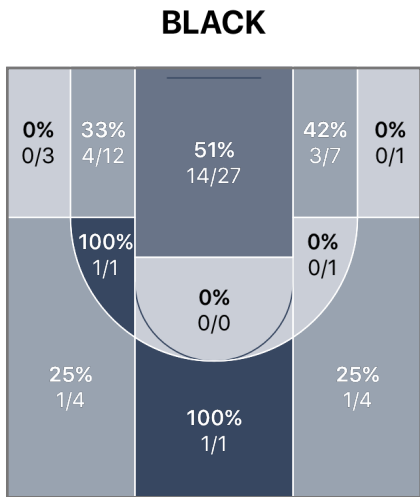
RLM Globetrotters 55 - 30 Taiwan #1

Home

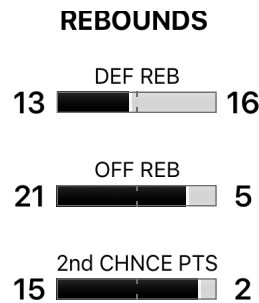
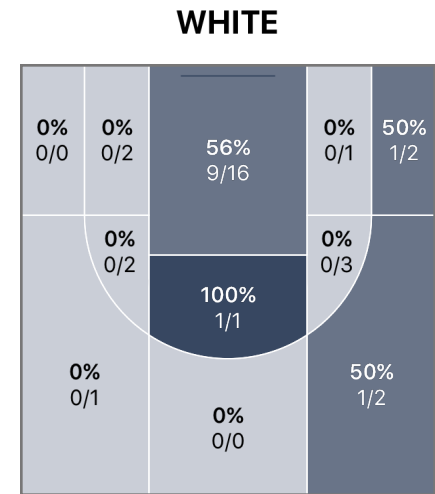
League

Sunday, February 28, 2016

BLACK 55 **Game Stats** **30** **WHITE**

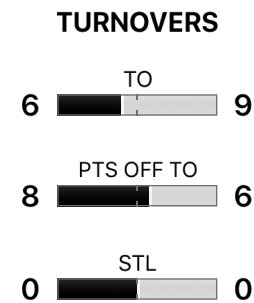


	1	2
BLACK	21	34
WHITE	15	15



POINTS

BLACK		WHITE
41%	FG%	40%
23%	3PT FG%	40%
50%	FT%	57%
28	PTS IN PAINT	18





Team Totals


	FGM-A	3PM-A	FTM-A	PIP	OREB	DREB	REB	2CP	AST	STL	POT	BLK	TO	PF	PTS
RLM GLOBETRO...	25-61	3-13	2-4	28	21	13	34	15	0	0	8	0	6	8	55
TAIWAN #1	12-30	2-5	4-7	18	5	16	21	2	0	0	6	0	9	2	30

FGM-A - Field Goal Makes/Attempts OREB - Offensive Rebounds AST - Assists TO - Turnovers
 3PM-A - 3 Point Makes/Attempts DREB - Defensive Rebounds STL - Steals PF - Personal & Technical Fouls
 FTM-A - Free Throw Makes/Attempts REB - Rebounds POT - Points off Turnovers PTS - Total Points
 PIP - Points in the Paint 2CP - 2nd Chance Points BLK - Blocks

RLM Globetrotters 55 - 30 Taiwan #1

 Home

 League

 Sunday, February 28, 2016

RLM Globetrotters Stats

PLAYERS	FGM-A	3PM-A	FTM-A	PIP	OREB	DREB	REB	2CP	AST	STL	POT	BLK	TO	PF	PTS ▾
#1, E Korman	9-15	2-4	2-4	12	0	0	0	0	0	0	8	0	0	1	22
#35, S Carney	6-15	1-4	0-0	6	0	0	0	9	0	0	0	0	1	1	13
#0, A Lee	4-11	0-1	0-0	8	0	0	0	2	0	0	0	0	2	2	8
#32, A Miller	3-5	0-0	0-0	0	0	0	0	2	0	0	0	0	2	1	6
#22, C Nygan	2-5	0-1	0-0	0	0	0	0	2	0	0	0	0	0	0	4
#55, A Ma	1-2	0-0	0-0	2	0	0	0	0	0	0	0	0	0	0	2
#4, R Neumayer	0-2	0-1	0-0	0	0	0	0	0	0	0	0	0	0	2	0
#12, E Burns	0-0	0-0	0-0	0	0	0	0	0	0	0	0	0	0	0	0
#15, N Gilbert	0-0	0-0	0-0	0	0	0	0	0	0	0	0	0	0	0	0
#21, R Jain	0-0	0-0	0-0	0	0	0	0	0	0	0	0	0	0	0	0
#24, S D'alton	0-0	0-0	0-0	0	0	0	0	0	0	0	0	0	0	0	0
#3, M Novack	0-0	0-0	0-0	0	0	0	0	0	0	0	0	0	0	0	0
Unassigned/Team	0-6	0-2	0-0	0	21	13	34	0	0	0	0	0	1	1	0
Total	25-61	3-13	2-4	28	21	13	34	15	0	0	8	0	6	8	55

FLAGRANT FOULS


BLACK TEAM None


TECHNICAL FOULS

BLACK TEAM None

RLM Globetrotters 55 - 30 Taiwan #1

 Home

 League

 Sunday, February 28, 2016

Taiwan #1 Stats

PLAYERS	FGM-A	3PM-A	FTM-A	PIP	OREB	DREB	REB	2CP	AST	STL	POT	BLK	TO	PF	PTS ▾
Unassigned/Team	12-30	2-5	4-7	18	5	16	21	2	0	0	6	0	9	2	30
Total	12-30	2-5	4-7	18	5	16	21	2	0	0	6	0	9	2	30

FLAGRANT FOULS

WHITE TEAM None

TECHNICAL FOULS

WHITE TEAM None