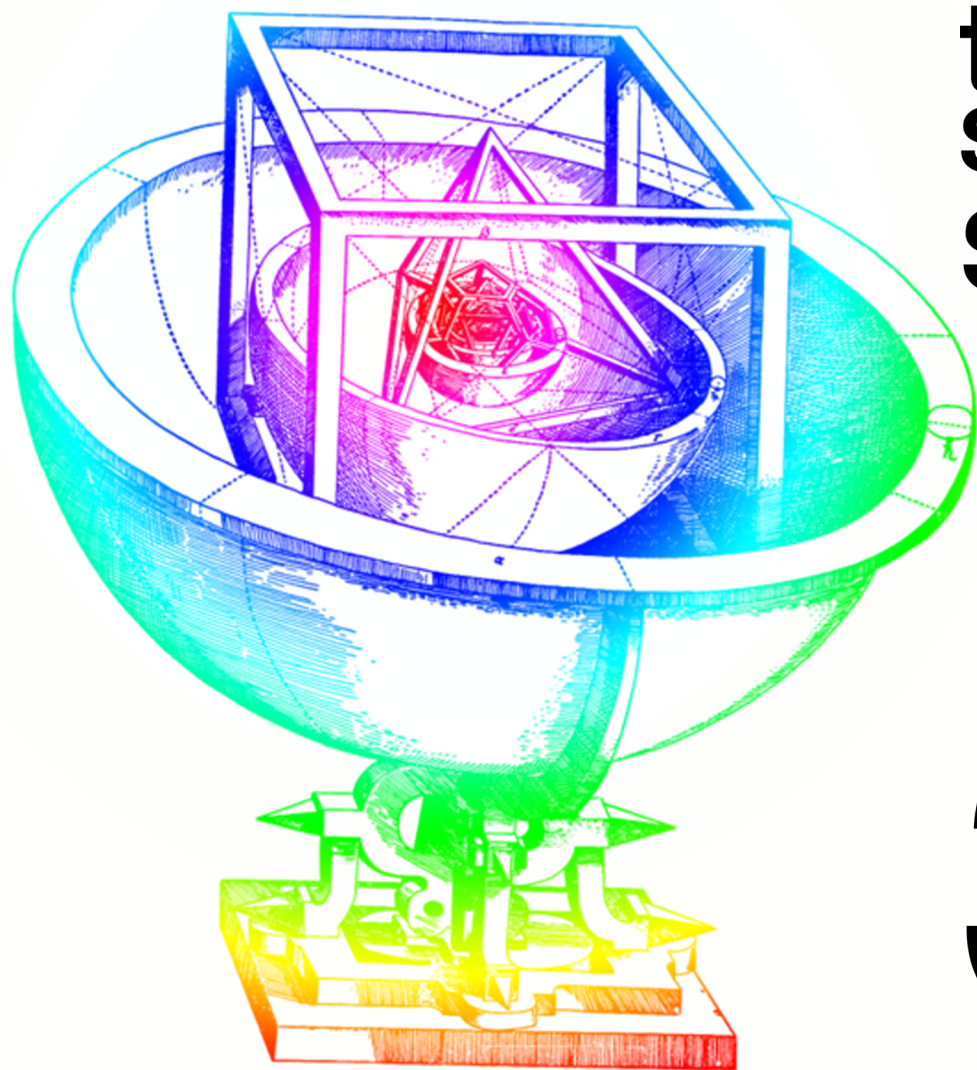


*The University of Texas at Austin Department of Mathematics*  
&

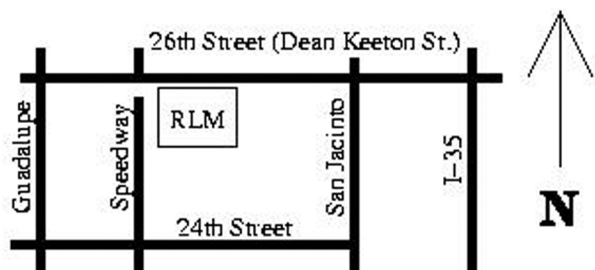
# THE SATURDAY MORNING MATH GROUP

*present*



# the most SYMMETRIC shapes IN 3D

*featuring* **Dr. David Jordan**  
*of The University of Texas*



**Feb. 11, 2012**

**10 AM - NOON**

**RLM 4.102**

**on the UT campus**

for info: <http://www.ma.utexas.edu/users/smmg/>  
or email Allison Moore: [smmg@math.utexas.edu](mailto:smmg@math.utexas.edu)